

Shell Design in Knitting

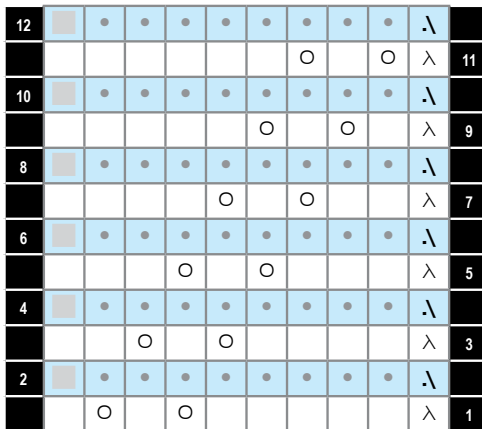
Cast on any number of stitches divisible by 9.

Design is worked over 12 rows.

Row 1	*sl 1 (kwise), k1, pss0, k5, yo, k1, yo, k1*. Repeat **.
Row 2	p8 , p2togb
Row 3	*sl 1 (kwise), k1, pss0, k4, yo, k1, yo, k2*. Repeat **.
Row 4	p8 , p2togb
Row 5	*sl 1 (kwise), k1, pss0, k3, yo, k1, yo, k3*. Repeat **.
Row 6	p8 , p2togb
Row 7	*sl 1 (kwise), k1, pss0, k2, yo, k1, yo, k4*. Repeat **.
Row 8	p8 , p2togb
Row 9	*sl 1 (kwise), k1, pss0, k1, yo, k1, yo, k5*. Repeat **.
Row 10	p8 , p2togb
Row 11	*sl 1 (kwise), k1, pss0, yo, k1, yo, k6*. Repeat **.
Row 12	p8 , p2togb

NOTES:

After knitting the first row, you will notice that you have increased 1 stitch in each pattern. This is correct. A decrease in all the even rows will take care of it.



Instead of purl 2 together through the back loop, you may purl 1, slip purlled stitch back on left needle, pass the next stitch over the purlled stitch and slip the purlled stitch back onto the right needle.